
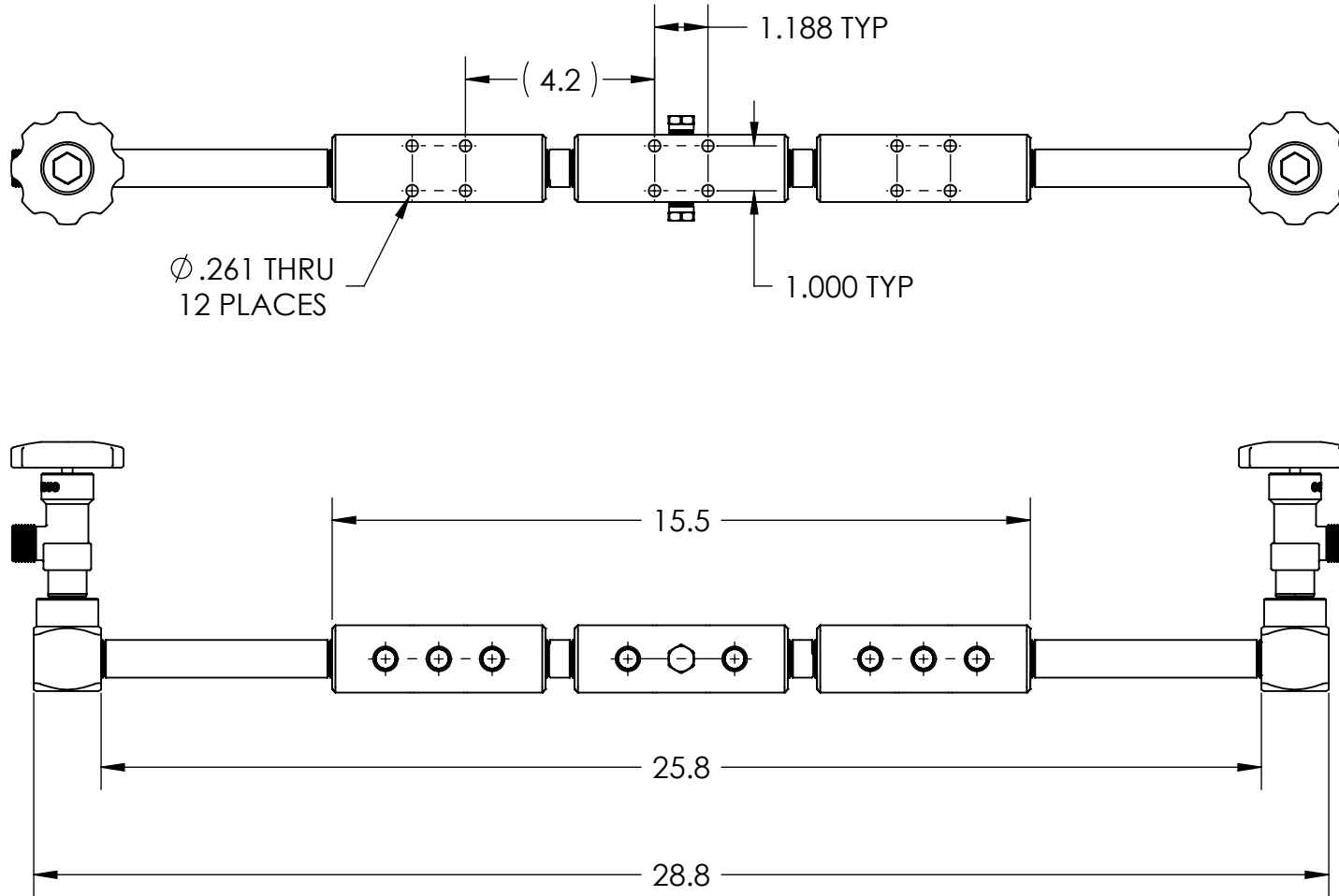


PART NUMBER: GMA-CPR-350-16-RGD				REV: A	CODE: A	DESCRIPTION: Cradle Pack, 16-Cyl, CGA-350, Rigid PT	MATERIAL: See BOM	FINISH: SHEET 1 of 1	 <i>Redefining Gas Management Systems</i>
REV A	ECN 10-0124	DATE 05-17-10	CHKD PSM	APPVD PSM	<u>TOLERANCES UNLESS SPECIFIED:</u> 125 √FINISH ALL OVER REMOVE ALL BURRS BREAK ALL CORNERS .005/.015 DECIMAL .XX +/- .015 .XXX +/- .005 ANGULAR +/- 1 CONCENTRICITY .007 TIR		<u>NOTICE:</u> THE DATA IN THIS DOCUMENT INCORPORATES PROPRIETARY INFORMATION AND RIGHTS OF SUPERIOR PRODUCTS, INC. CONFIDENCE AND AGREES THAT IT SHALL NOT BE DUPLICATED IN WHOLE OR IN PART, NOR DISCLOSED TO OTHERS WITHOUT THE WRITTEN CONSENT OF SUPERIOR PRODUCTS, INC.	INTERPRET GEOMETRIC TOLERANCING PER: ANSI Y14.5  DO NOT SCALE	



Additional Components Included but not Shown:  
16x PT-34E-350-36 Rigid Copper Pigtails